

# Plug-in card module RS-232

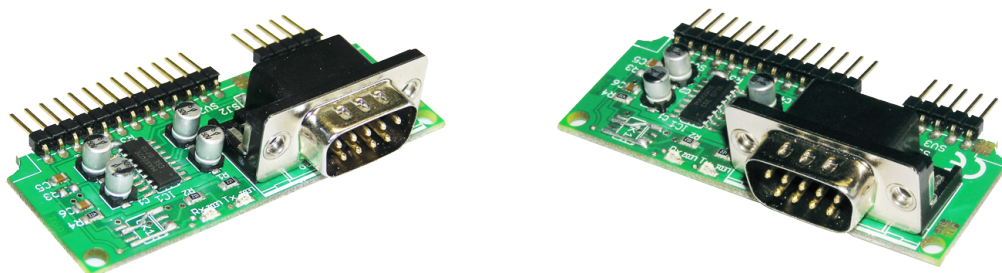


Schneid GesmbH | Gewerbering 16 | A-8054 | Graz/Pirka | Tel: +43 (316) 285022

Products, data sheets, documentation, MR12-SCHEMA-calculator: [www.schneid.at](http://www.schneid.at)

## SCHNEID plug-in card module RS-232 for SCHNEID communication base module

Order number:	130.10522
Order code:	Steckkartenmodul RS232



### Overview:

The SCHNEID plug-in card module RS232 is only suitable for the SCHNEID communication base modules of the module control series.

With this plug-in module card, the control device can be integrated into an RS232 data network.

This module is available in 2 versions.

RS232-F (plug 9-pin socket) for connection to a PC or laptop.

RS232-M (plug 9-pin male) for connection to a data transmission device (modem).

### Terminal diagram:

In addition to the 9-pin Sub-D connector, the interface can also be accessed on the terminals.

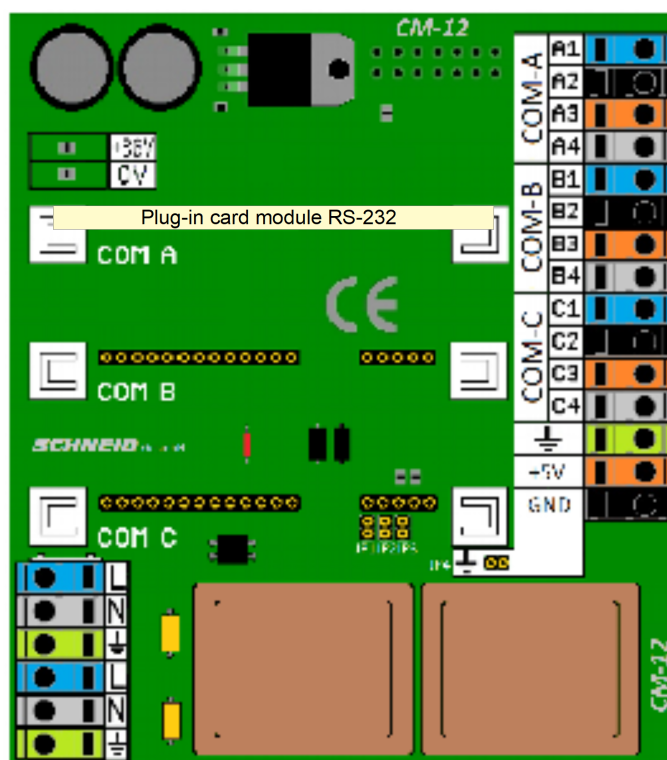
**The terminal assignment relates to the respective slot.**

COM-A	terminals A1-A4
COM-B	terminals B1-B4
COM-C	terminals C1-C4

### Connection to terminals:

1	RS232 TX
2	RS232 RX
3	GND
4	n.c

# Plug-in card module RS-232



## Scope of Delivery:

SCHNEIDER plug-in card module RS-232

## Technical specifications:

Intrastat Number	8537.10.91.90
Country of origin	EU/AT
Height, width, depth (in mm)	36x65x17
Weight (in kg)	0,016
Protection	IP-00
Ambient temperature	0°C....+40°C
Operating voltage	5VDC
Power consumption	75mA
Max baud rate	9600 Bit/s
Connection type	Male headers for base module + Sub D 9-pin
Mounting type	Plug-in card module
Operating time	Continuous operation
Degree of pollution	2