

# Speed controller expansion board FPD2

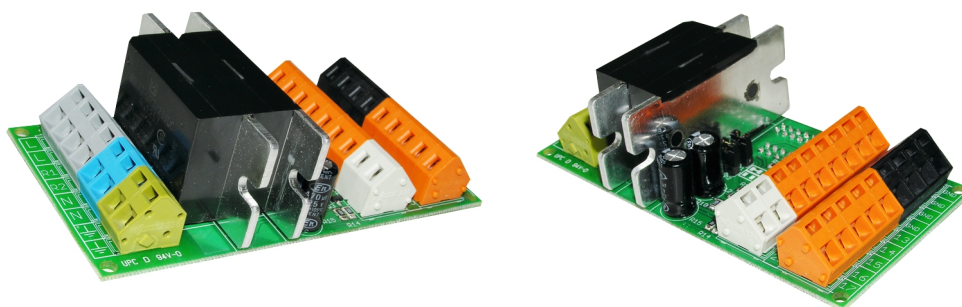


Schneid GesmbH | Gewerbering 16 | A-8054 | Graz/Pirka | Tel: +43 (316) 285022

Products, data sheets, documentation, MR12-SCHEMA-calculator: [www.schneid.at](http://www.schneid.at)

**Expansion board speed controller half-wave control FPD2  
with 2 speed outputs and 2 pieces 0-5V outputs  
for the module controllers MR06/07/08/12**

Order number:	300.10993
Order code:	Erw.-Platine Drehzahlregler FPD2 halbwellensteuert



## Overview:

The additional module has two half-wave controlled speed control modules that are controlled by the SCHNEID module control device. By switching off any number of half-waves using a semiconductor relay, the speed is regulated in ten stages from 0% to 100%. Frequent switching on is always carried out at zero voltage crossing, switching off at zero current crossing.

This results in a harmonious speed control behavior and a very long service life because voltage peaks are avoided. The speed module is primarily used to control small, single-phase fans and pumps.

The load capacity of the output is limited to 5A. The maximum power of the connected motor should be a maximum of 300VA (taking into account the starting current)

## Scope of delivery:

SCHNEID expansion board speed controller FPD2 half-wave controlled

Supplied with two cables:

-1x for MR06 14 pin

-1x for MR07/08 10-pin

## Terminal diagram:

