

Speed controller expansion board FPD1

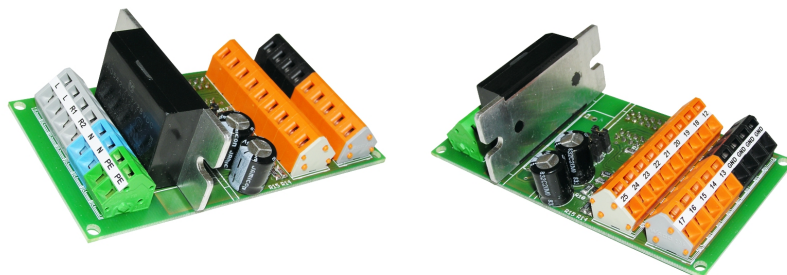


Schneid GesmbH | Gewerbering 16 | A-8054 | Graz/Pirka | Tel: +43 (316) 285022

Products, data sheets, documentation, MR12-SCHEMA-calculator: www.schneid.at

Expansion board speed controller half-wave control FPD1 for the module controllers MR06/07/08/12

Order number:	300.10996
Order code:	Erw.-Platine Drehzahlregler FPD1 halbwellensteuert



Overview:

The additional module has a half-wave controlled speed control module that is controlled by the SCHNEID module control device. By switching off any number of half-waves using a semiconductor relay, the speed is regulated in ten stages from 0% to 100%. Frequent switching on is always carried out at zero voltage crossing, switching off at zero current crossing.

This results in a harmonious speed control behavior and a very long service life because voltage peaks are avoided. The speed module is primarily used to control small, single-phase fans and pumps.

The load capacity of the output is limited to 5A. The maximum power of the connected motor should be a maximum of 300VA (taking the starting current into account).

Scope of delivery:

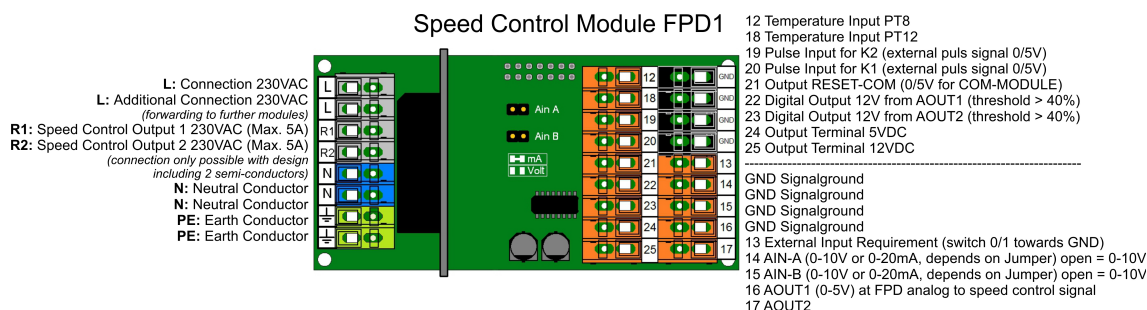
SCHNEID expansion board speed controller FPD1 half-wave controlled

Supplied with two cables:

-1x for MR06 14 pin

-1x for MR07/08 10-pin

Terminal diagram:



Speed controller expansion board FPD1

Connections 230V:

L	230VAC connection
L	Additional connection 230VAC (continuation to another module)
R1	speed output 230VAC (max.5A)
R2	not running N neutral conductor
N	neutral conductor
PE	

Signal connections:

12	Temperature input PT8
18	Temperature input PT12
19	Pulse input for K2 (external pulse signal 0/5V)
20	pulse input for K1 (external pulse signal 0/5V)
21	RESET-COM output (0/5V for com modules)
22	digital output 12V from Aout1 (switching threshold > 40%)
23	digital output 12V from Aout2 (switching threshold > 40%)
24	output terminal 5 VDC
25	output terminal 12VDC

GND Signalground

13	External request input (switch 0/1 to GND)
14	AINA (0-10V or 0-20mA depending on jumper) open = 0-10V
15	AINB (0-10V or 0-20mA depending on jumper) open = 0-10V
16	Aout1 (0-5V) at FPD analogous to speed signal
17	Aout2 (0-5V)

Technical data (with two cables 800mm):

Intrastat Number:	8537.10.91.90
Country of origin	EU/AT
Height, width, depth (in mm)	51x100x38
Weight in kg	0.071 without cables 0.117 with cable
Degree of protection	IP-20
Ambient temperature	0°C....+40°C
Operating voltage	12VDC
Power consumption	< 1VA
Max. rated current per output	5A
Connection type	terminals for fixed wiring
Connection technology	spring terminal
Cable cross-section	Max. 2.5mm ²
Mounting type	DIN-RAIL TS35
Operating time	continuous operation
Degree of pollution	2