

Analogue output card for MR07-PLC controller

SCHNEID expansion board analog output card for MR07-PLC controller
8 analog outputs 0-10V

Order number:	170.11105
Order code:	Analogausgangskarte für MR07-SPS Regler



Overview:

The additional module extends the module controller by 8 analog outputs.

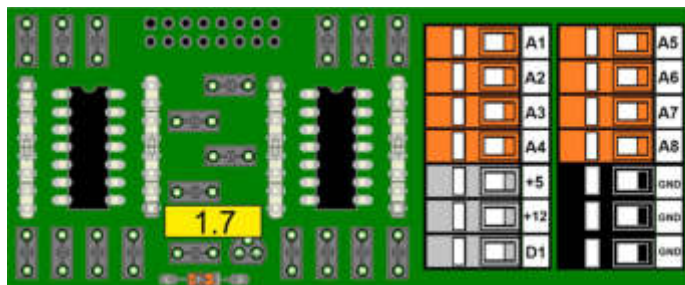
Use cases:

- Actuation of actuators with 0-10V
- Control of pumps and frequency converters with 0-10V
- Signal output (temperature specifications, etc.)

Scope of delivery:

Analog output card
16-pin ribbon cables 80cm

Terminal plan:



AOUT Modul

- A1 LU1 - speed setpoint supply air fan
- A2 LU2 - speed setpoint exhaust air fan
- A3 K1/2/3 - position setpoint supply/bypass air flap
- A4 K4 - position setpoint recuperation air flap
- A5 LU1 - position setpoint heating coil static valve
- A6 LU2 - position setpoint cooling coil static valve
- A7 K1/2/3 - setpoint heating load
- A8 K4 - setpoint cooling load