

# Communication base module CM10

## Terminal plan:

### Supply connections:

|        |  |
|--------|--|
| 12VDC+ | Supply 12-24VDC                        |
| GND    | Supply 12-24VDC                        |
| PE     | Connection for (possibly) cable shield |

### Interface connections:

Controller connector: 14-pin

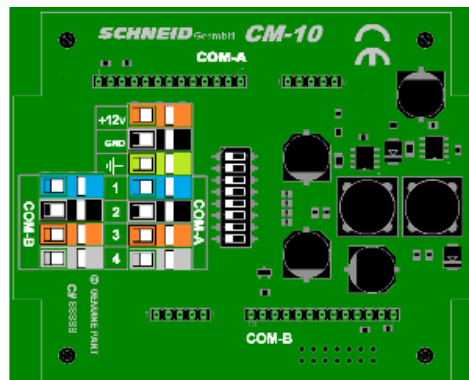
There are 2 slots for communication cards on the module.

### Connections:

|       |                    |
|-------|--------------------|
| COM-A | to terminals A1-A4 |
| COM-B | to terminals B1-B4 |

Terminals 1-4 have different assignments depending on the interface card. These are described for the individual cards.

COM-B  
Verbrauchsdaten-  
erfassung  
(Wärmezähler,  
Stromzähler, ...)



VCC - +12VDC  
GND - Masse/Ground

COM-A  
FSS-Datennetz  
Visualisierung