

Communication base module CM10



Schneid GesmbH | Gewerbering 16 | A-8054 | Graz/Pirka | Tel: +43 (316) 285022

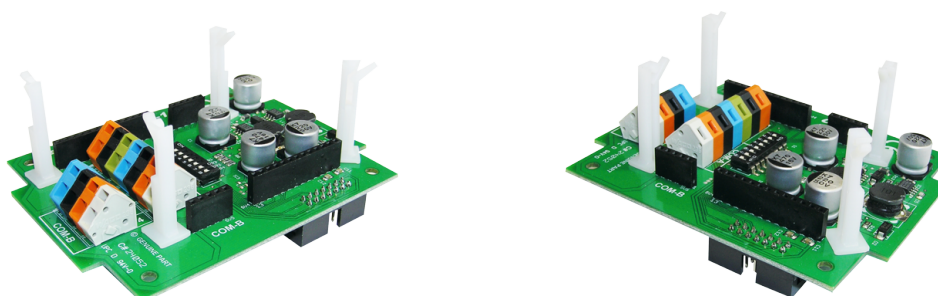
Products, data sheets, documentation, MR12-SCHEMA-calculator: www.schneid.at

SCHNEID communication base module CM10

for all SCHNEID module controllers (without sub-communication)

Order number: 130.15227

Order code: Kommunikationsbasismodul CM10



Overview:

With the communication base module CM10, the base module controller can be equipped with up to two bus interfaces:

1. COM-A standard bus for system visualization via SCHNEID-WinMiocs or SinVIS
2. COM-B meter interface (MBUS)

A corresponding bus module can be fitted for each of the two bus interfaces, depending on the application. The following bus modules are available:

- RS232 bus module	- TCP/IP Ethernet bus module
- RS485 bus module	- BT (Bluetooth) bus module
- RS422 bus module	- RF RadioFrequency) module
- MBUS-Master bus module	- GPRS module
- MBUS-Slave bus module	- MP-Bus module
- USB bus module	- PGW-Bacnet module

Terminal 12VDC: as soon as mains are used that have a current consumption of over 200mA or the total current through possibly a second module exceeds this limit, the board must be supplied externally via this terminal.

Examples of networking:

COM-A: All data from the controller and the heat meter are transferred to the master computer in the boiler house via the special SCHNEID-FSS interface (see WINMIOCS and FW-MANAGEMENT).

COM-B: Reading of the measurement data from heat meters, electricity meters and other external devices via M-Bus interface (M-Bus protocol according to CEN TC176 WG4 and IEC1107). Recorded data using the example of a heat meter: amount of heat, flow rate, flow and return temperature, spread, output, flow rate, etc.

Communication base module CM10

Terminal plan:

Supply connections:

12VDC+	Supply 12-24VDC
GND	Supply 12-24VDC
PE	Connection for (possibly) cable shield

Interface connections:

Controller connector: 14-pin

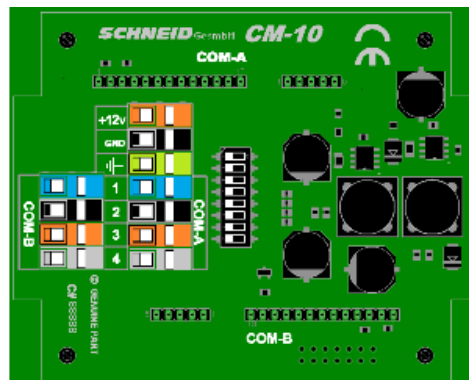
There are 2 slots for communication cards on the module.

Connections:

COM-A	to terminals A1-A4
COM-B	to terminals B1-B4

Terminals 1-4 have different assignments depending on the interface card. These are described for the individual cards.

COM-B
Verbrauchsdaten-
erfassung
(Wärmezähler,
Stromzähler, ...)



VCC - +12VDC
GND - Masse/Ground

COM-A
FSS-Datennetz
Visualisierung

Communication base module CM10

Scope of delivery:

SCHNEID communication base module CM10 including 14-pin connection cable 800mm

Technical specifications:

Intrastat Number:	8537.10.91.90
Country of origin	EU/AT
Height, width, depth (in mm)	80x100x42
Weight (in kg)	0,082
Protection class	IP-20
Ambient temperature	0°C +40°C
Operating voltage	12-24VDC
Power consumption	Depending on the interface cards used
Connection type	Fixed wiring terminals
Connection technology	Cage clamp
Line cross-section	Max. 2.5mm ²
Mounting type	DIN-RAIL TS35
Operating time	Continuous operation
Degree of pollution	1