

# Repeater base module CM10-R

## Terminal diagram:

### Supply Connections:

12VDC+	Supply 230VAC
GND	Supply 230VAC
PE	

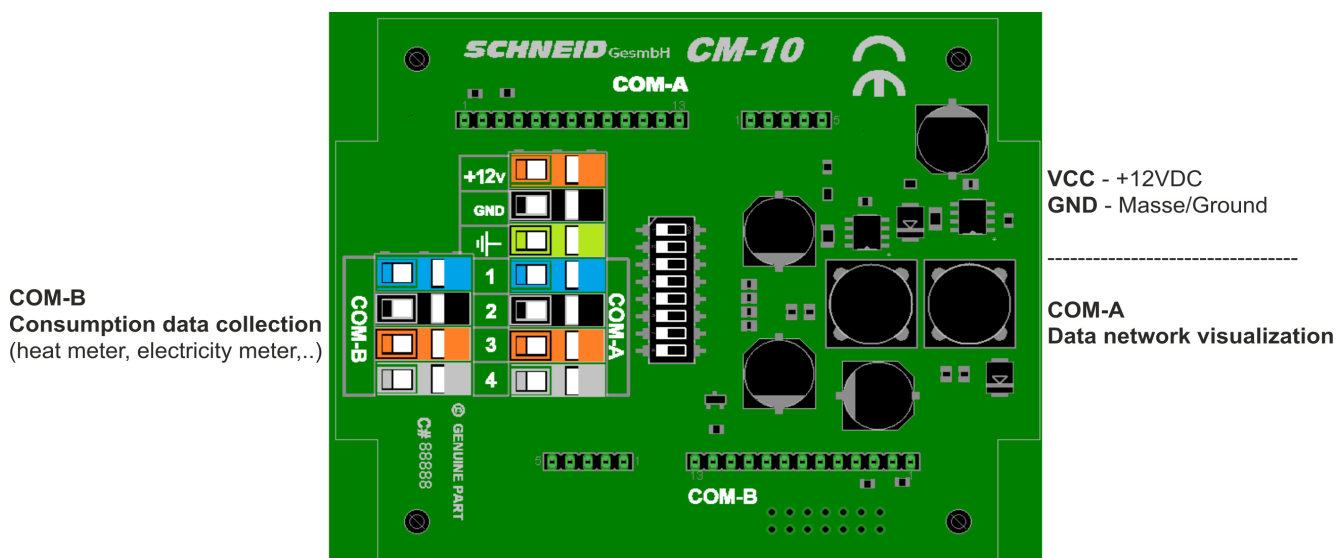
### Interface Connections:

There are 2 slots for communication plug-in cards on the module.  
The COM-A+B slots are routed to terminals.

### Verbindungen:

COM-A	to terminals A1-A4
COM-B	to terminals B1-B4

Depending on the interface card, terminals 1-4 have different assignments. These are described on the individual cards.



## Block Diagram:

\*Supply = 12-24VDC

\*integrated voltage converter 36V for MBUS master cards

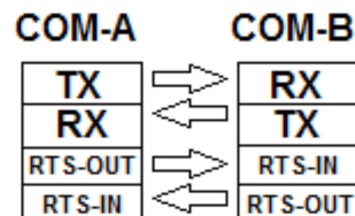
The CM10R repeater module does not have an integrated RTS timer circuit. It is therefore always necessary to combine it with an "intelligent" interface card.

Example combinations:

- \*COMA = RS422/485 COMB = COM08-RF (radio)
  - \*COMA = MBUS COMB = COM08-RF (radio)
  - \*COMA = CM08-TCP COMB = COM08-RF (radio)
  - \*COMA = CM08-COM08-RF-HP COMB = COM08-RF-LP
- and many more combinations...

In no case do these combinations work:

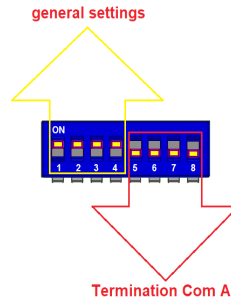
- \*COMA = RS422/485 COMB = RS422/485
- \*COMA = MBUS COMB = RS422/485
- \*COMA = RS422/485 COMB = MBUS



# Repeater base module CM10-R

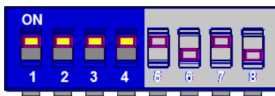
## Dipswitch::

### Allocation of the individual switches



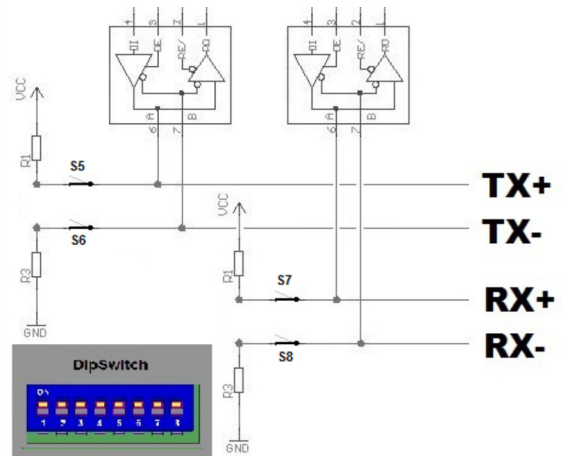
### Dip Switch 1-4 Repeater General setting

These 4 pieces must be set to "ON" for the module to function as a repeater. An adjustment is only necessary in special cases and is only to be carried out on instruction or in consultation with our technicians.



### Dipswitch 5-8 RX COMA termination

Termination = ON is required for RS422 masters. This places the RX+ and RX- signals at defined idle levels. (RX+ 5V and RX- GND)



Termination = OFF is required if other interfaces are used, which do not require termination or are not allowed to use such as: MBUS or, if the module is operated as an RS422 slave.

