

Repeater base module CM10-R



Schneid GesmbH | Gewerbering 16 | A-8054 | Graz/Pirka | Tel: +43 (316) 285022

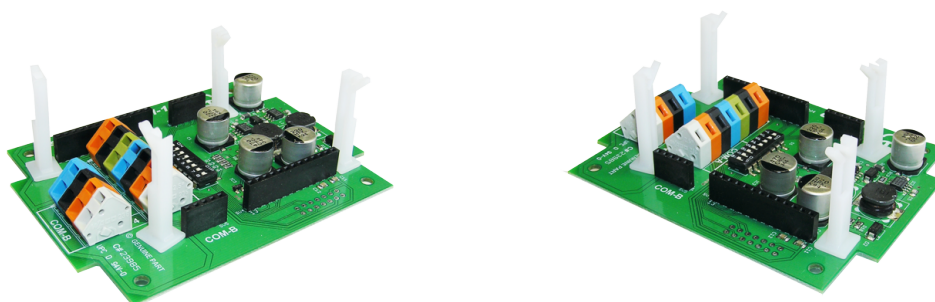
Products, data sheets, documentation, MR12-SCHEMA-calculator: www.schneid.at

SCHNEID Repeater base module CM10-R

for all SCHNEID module controllers for repeater and gateway variants

Order number: 130.15260

Order code: Repeaterbasismodul CM10-R



Overview:

The SCHNEID repeater base module CM10-R serves as the basis for gateway and repeater applications. This means that two different interfaces can be bridged. This module is primarily used in connection with wireless networks (radio, Bluetooth,...)

Depending on the application, a corresponding bus module can be fitted for each of the two bus interfaces.

The following bus modules are available:

-RS232 bus module	-TCP/IP Ethernet bus module
-RS485 bus module	-BT (Bluetooth) radio module
-RS422 bus module	-RF (RadioFrequency) radio module
-MBUS-Master bus module	-GPRS module
-MBUS-Slave bus module	-MP-Bus module
-USB bus module	PGW-Bacnet module

Repeater base module CM10-R

Terminal diagram:

Supply Connections:

12VDC+	Supply 230VAC
GND	Supply 230VAC
PE	

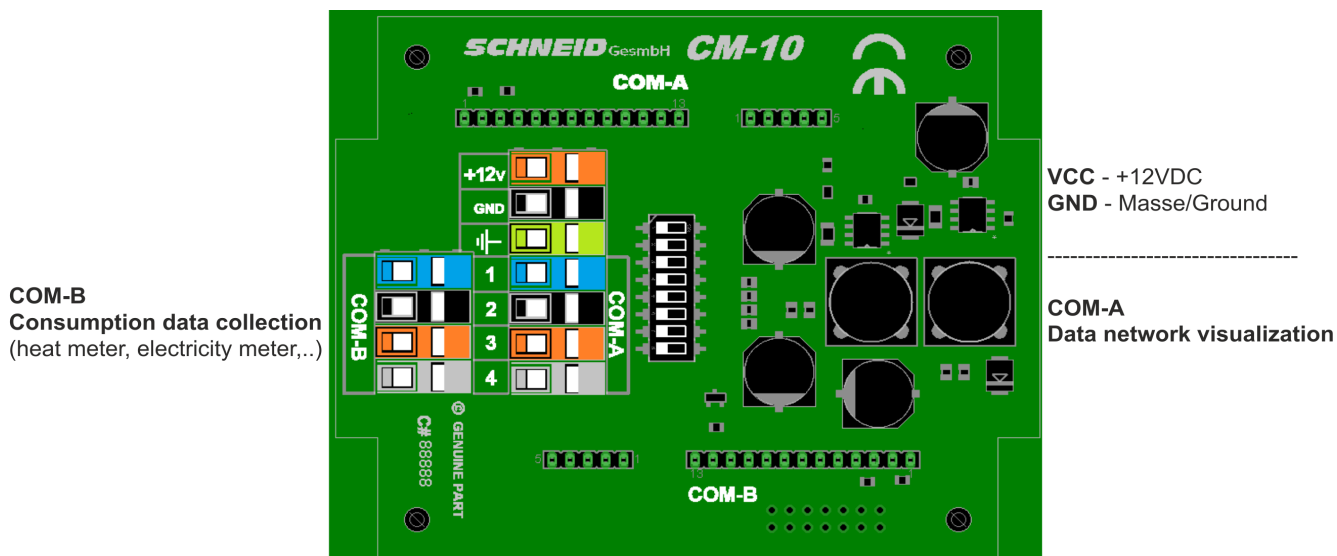
Interface Connections:

There are 2 slots for communication plug-in cards on the module.
The COM-A+B slots are routed to terminals.

Verbindungen:

COM-A	to terminals A1-A4
COM-B	to terminals B1-B4

Depending on the interface card, terminals 1-4 have different assignments. These are described on the individual cards.



Block Diagram:

*Supply = 12-24VDC

*integrated voltage converter 36V for MBUS master cards

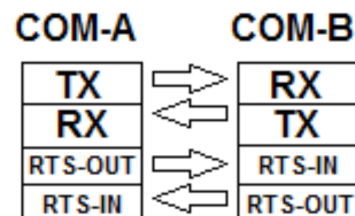
The CM10R repeater module does not have an integrated RTS timer circuit. It is therefore always necessary to combine it with an "intelligent" interface card.

Example combinations:

- *COMA = RS422/485COMB = COM08-RF (radio)
 - *COMA = MBUSCOMB = COM08-RF (radio)
 - *COMA = CM08-TCPCOMB = COM08-RF (radio)
 - *COMA = CM08-COM08-RF-HPCOMB = COM08-RF-LP
- and many more combinations...

In no case do these combinations work:

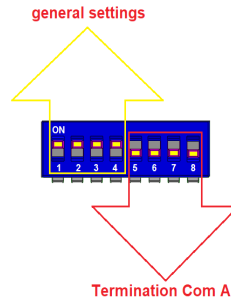
- *COMA = RS422/485COMB = RS422/485
- *COMA = MBUSCOMB = RS422/485
- *COMA = RS422/485COMB = MBUS



Repeater base module CM10-R

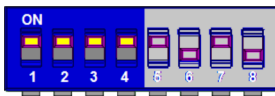
Dipswitch::

Allocation of the individual switches



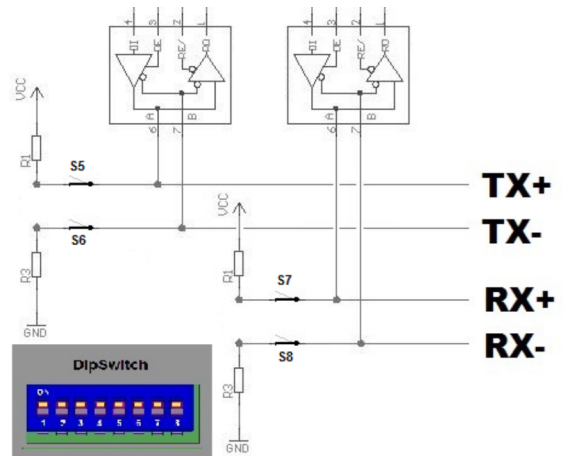
Dip Switch 1-4 Repeater General setting

These 4 pieces must be set to "ON" for the module to function as a repeater. An adjustment is only necessary in special cases and is only to be carried out on instruction or in consultation with our technicians.

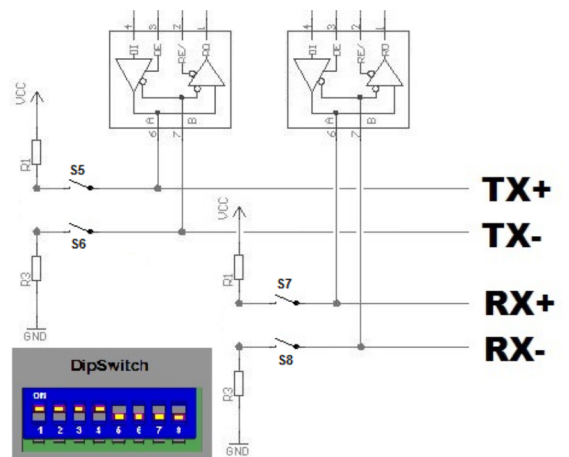


Dipswitch 5-8 RX COMA termination

Termination = ON is required for RS422 masters. This places the RX+ and RX- signals at defined idle levels. (RX+ 5V and RX- GND)



Termination = OFF is required if other interfaces are used, which do not require termination or are not allowed to use such as: MBUS or, if the module is operated as an RS422 slave.



Repeater base module CM10-R

Scope of delivery:

SCHNEID Kommunikationsbasismodul CM10-R

Technical specifications:

Intrastat number:	8537.10.91.90
Country of origin	EU/AT
Height, width, depth (in mm) module	80x100x38
Weight (in kg)	0,054
Degree of protection	IP-20
Ambient temperature	0°C +40°C
Operating voltage	12-24VDC
Power consumption	Depending on the interface cards used
Connection type	Terminals for fixed wiring
Connection technology	spring terminal
Cable cross-section	Max. 2.5mm ²
Mounting type	DIN-RAIL TS35
Operating time	continuous operation
Degree of pollution	1