

# Poti and 0/1/Auto hand control units for DIN rail housing with plug-in relay

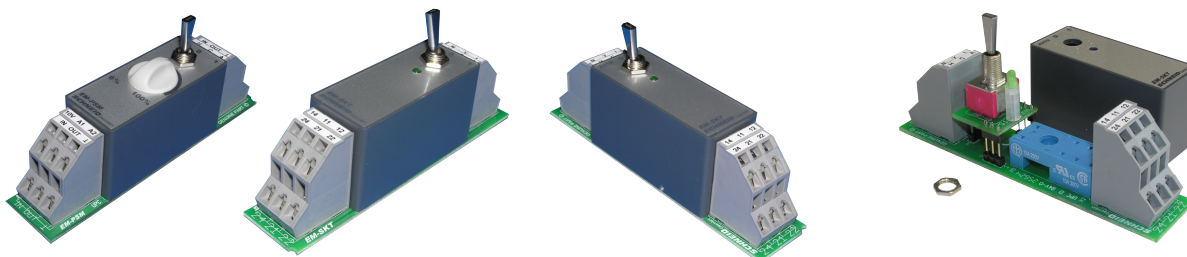


Schneid GesmbH | Gewerbering 16 | A-8054 | Graz/Pirka | Tel: +43 (316) 285022

Products, data sheets, documentation, MR12-SCHEMA-calculator: [www.schneid.at](http://www.schneid.at)

## Poti and 0/1/Auto hand control units for DIN rail housing with plug-in relay

Order number	300.xxxxx – see below
Order code:	Xxxxx – see below



### Overview:

With these manual control units, the outputs of the PLC or the control can also be switched OFF or ON. In the AUTO position, the output of the PLC is switched through to the output of the manual control unit. In position 1-manual operation, the analog signal can be set with the potentiometer.

These modules ensure that the system can continue to be run in manual mode even if the PLC fails.

Hand control units with housing and pluggable relays in various designs

### Equipment variants:

#### POTI 0-10V hand control unit, DIN rail with housing

Order number: 300.14387

Order code: POTI 0-10V Handbedieneinheit, DIN-Rail mit Gehäuse

#### 0/1/Auto hand control unit 230V, DIN rail with housing, socket and relay 2-pin, 8A

Order number: 300.14388

Order code: 0/1/Auto Handbedieneinheit 230V, 2pol, 8A

#### 0/1/Auto hand control unit 230V, DIN rail with housing, socket and relay 1-pole, 16A

Order number: 300.16282

Order code: 0/1/Auto Handbedieneinheit 230V, 1-polig, 16A

#### 0/1/Auto hand control unit 230V, DIN rail with housing, socket and relay 2-pin, gold

Order number: 300.16281

Order code: 0/1/Auto Handbedieneinheit 230V, 2-polig, Gold

# Poti and 0/1/Auto hand control units for DIN rail housing with plug-in relay

## 0/1/Auto Handbedieneinheit 24VDC, DIN-Rail mit Gehäuse, Stecksockel und Relais 2pol, 8A

Order number: 300.14389

Order code: 0/1/Auto Handbedieneinheit 24VDC, 2pol, 8A

## 0/1/Auto Handbedieneinheit 24VDC, DIN-Rail mit Gehäuse, Stecksockel und Relais 1-polig, 16A

Order number: 300.16284

Order code: 0/1/Auto Handbedieneinheit 24VDC, 1-polig, 16A

## 0/1/Auto Handbedieneinheit 24VDC, DIN-Rail mit Gehäuse, Stecksockel und Relais 2-polig, Gold

Order number: 300.16285

Order code: 0/1/Auto Handbedieneinheit 24VDC, 2-polig, Gold

## 0/1/Auto Handbedieneinheit für 230V, DIN-Rail mit Gehäuse, Stecksockel ohne Relais

Order number: 300.14375

Order code: 0/1/Auto Handbedieneinheit für 230V, ohne Relais

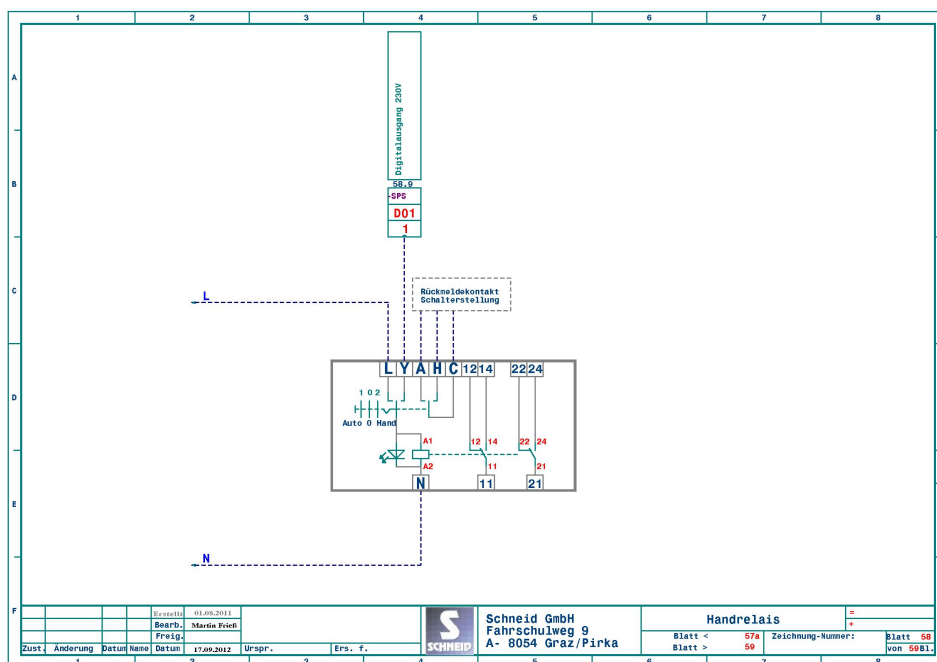
## 0/1/Auto Handbedieneinheit für 24VAC/VDC, DIN-Rail mit Gehäuse, Stecksockel ohne Relais

Order number: 300.18247

Order code: 0/1/Auto Handbedieneinheit für 24VAC/VDC, ohne Relais

### Connection diagram:

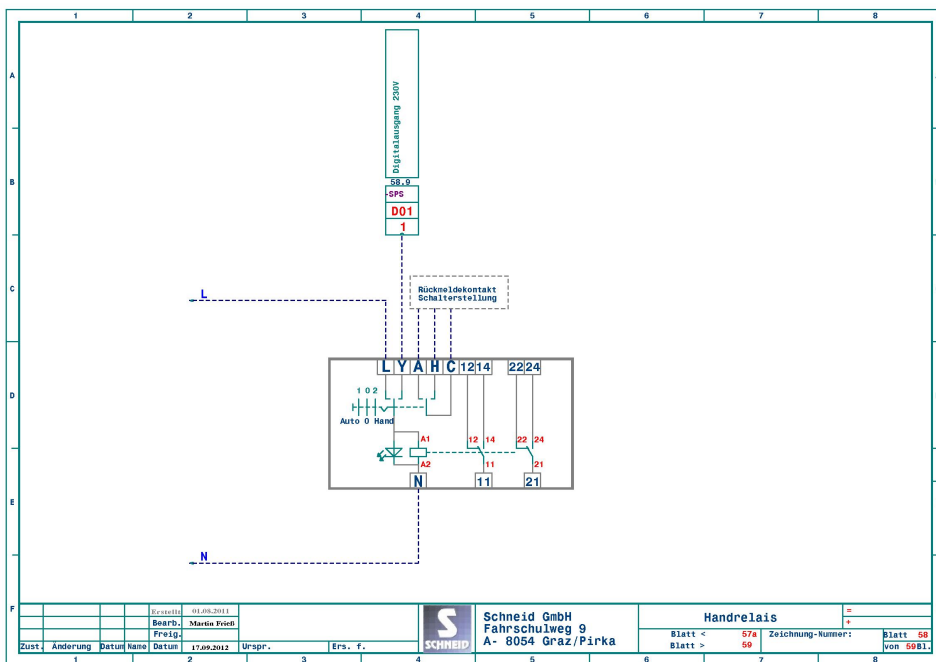
24VDC



# Poti and O/1/Auto hand control units for DIN rail housing with plug-in relay

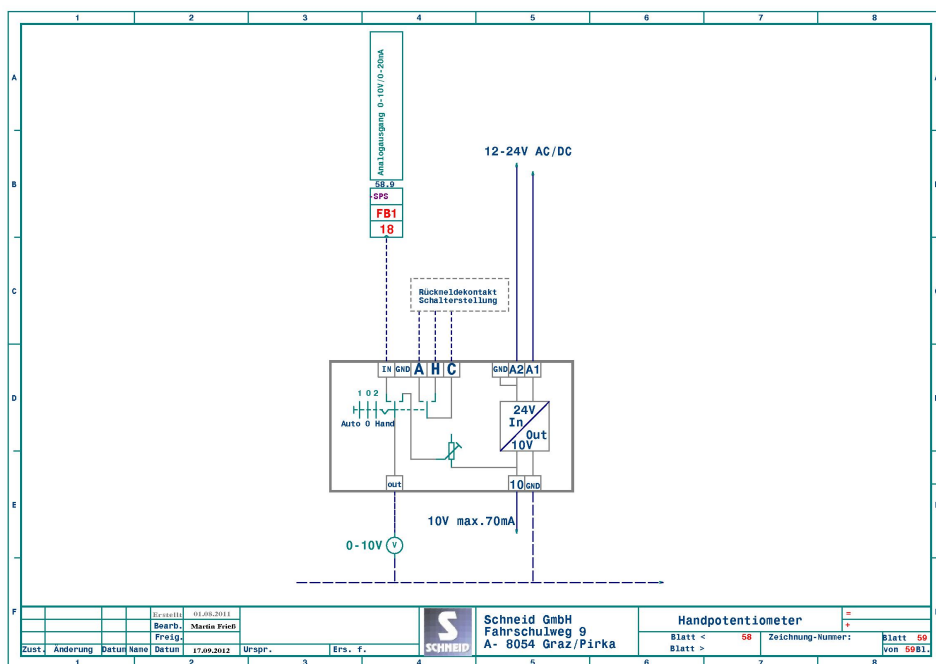
## Connection diagram:

230V



## Connection diagram:

POTI



# **Poti and 0/1/Auto hand control units for DIN rail housing with plug-in relay**

## **Scope of delivery:**

- POTI 0-10V hand control or
- 0/1/Auto manual control unit for 230V with/without various plug-in relays
- 0/1/Auto hand control unit for 24VDC with/without various plug-in relays

## **Technical specifications Poti:**

Intrastat number	8537.10.91.90
Country of origin	EU/AT
Height, width, depth (in mm)	22x100x48
Weight in (kg)	Poti 0,040 / 230V 0,053 / 24VDC 0,053
Degree of protection	IP-20
Ambient temperature	0°C....+40°C

## **Technical specifications Handbedieneinheit 230V:**

Intrastat number	8537.10.91.90
Country of origin	EU/AT
Height, width, depth (in mm)	22x100x48
Weight in (kg)	Poti 0,040 / 230V 0,053 / 24VDC 0,053
Degree of protection	IP-20
Ambient temperature	0°C....+40°C

## **Technical specifications Handbedieneinheit 24VDC:**

Intrastat number	8537.10.91.90
Country of origin	EU/AT
Height, width, depth (in mm)	22x100x48
Weight in (kg)	Poti 0,040 / 230V 0,053 / 24VDC 0,053
Degree of protection	IP-20
Ambient temperature	0°C....+40°C

# **Poti and O/1/Auto hand control units for DIN rail housing with plug-in relay**

## **Technical specifications plug-in relay:**

### **Plug-in relay for manual control unit, DIN rail**

#### **230VAC, 1-pole, 16A continuous 80A inrush current**

Order number: 300.14378

Order code: Steckrelais für Handbedieneinheit, DIN-Rail, 230VAC, 1-polig, 16A Dauer 80A Einschaltstrom

Number of contacts: 1 changeover

Max. continuous current/max. Inrush current A: 16/30

Rated Voltage/Max Switching Voltage VAC: 250/400

Max. switching capacity AC1 VA: 4,000

Max. switching capacity AC15 (230VAC) VA: 750

1-phase motor load, AC3 operation (230VAC) kW: 0.5

Max. switching current DC1: 16/0.3/0.12

Min. switching load mW (V/mA): 300 (5/5)

Contact material: AgNi

### **Plug-in relay for manual control unit, DIN rail**

#### **230VAC; 2-pin, 8A**

Order number: 300.14377

Order code: Steckrelais für Handbedieneinheit, 230VAC; 2-polig, 8A

Number of contacts: 2 changeover

Max. continuous current/max. Inrush current A: 8/15

Rated Voltage/Max Switching Voltage VAC: 250/400

Max. switching capacity AC1 VA: 2,000

Max. switching capacity AC15 (230VAC) VA: 400

1-phase motor load, AC3 operation (230VAC) kW: 0.3

Max. switching current DC1: 8/0.3/0.12

Min. switching load mW (V/mA): 300 (5/5)

Contact material: AgNi

### **Plug-in relay for manual control unit, DIN rail**

#### **230VAC, 2-pin, gold contact**

Order number: 300.14379

Order code: Steckrelais für Handbedieneinheit, 230VAC, 2-polig, Goldkontakt

Number of contacts: 2 changeover

Max. continuous current/max. Inrush current A: 6/10

Rated Voltage/Max Switching Voltage VAC: 250/400

Max. switching capacity AC1 VA: 1,500

Max. switching capacity AC15 (230VAC) VA: 300

1-phase motor load, AC3 operation (230VAC) kW: 0.185

Max. switching current DC1: 30/110/220V A: 6/0.2/0.12

Min. switching load mW (V/mA): 500 (125/10)

Contact material: AgNi+Au Gold contacts AgNi+Au

Silver-nickel contact with a galvanically applied hard gold plating with a typical thickness of 5 µm. Gold is largely insensitive to industrial atmospheres. In the area of small switching capacities, the contact resistances are lower and more constant than with other contact materials.

# **Poti and 0/1/Auto hand control units for DIN rail housing with plug-in relay**

## **Plug-in relay for manual control unit, DIN rail 24VAC, 1 pole, 16A continuous 80A inrush current**

Order number: 300.16281

Order code: Steckrelais für Handbedieneinheit, 24VAC, 1-polig, 16A Dauer 80A Einschaltstrom

Number of contacts: 1 changeover

Max. continuous current/max. Inrush current A: 16/30

Rated Voltage/Max Switching Voltage VAC: 250/400

Max. switching capacity AC1 VA: 4,000

Max. switching capacity AC15 (230VAC) VA: 750

1-phase motor load, AC3 operation (230VAC) kW: 0.5

Max. switching current DC1: 16/0.3/0.12

Min. switching load mW (V/mA): 300 (5/5)

Contact material: AgNi

## **Plug-in relay for manual control unit, DIN rail 24VAC; 2-pin, 8A**

Order number: 300.14389

Order code: Steckrelais für Handbedieneinheit, 24VAC; 2-polig, 8A

Number of contacts: 2 changeover

Max. continuous current/max. Inrush current A: 8/15

Rated Voltage/Max Switching Voltage VAC: 250/400

Max. switching capacity AC1 VA: 2,000

Max. switching capacity AC15 (230VAC) VA: 400

1-phase motor load, AC3 operation (230VAC) kW: 0.3

Max. switching current DC1: 8/0.3/0.12

Min. switching load mW (V/mA): 300 (5/5)

Contact material: AgNi

## **Plug-in relay for manual control unit, DIN rail 24VDC, 1-pole, 16A continuous 80A inrush current**

Order number: 300.18482

Order code: Steckrelais für Handbedieneinheit, 24VDC, 1-polig, 16A Dauer 80A Einschaltstrom

Number of contacts: 1 changeover

Max. continuous current/max. Inrush current A: 16/30

Rated Voltage/Max Switching Voltage VAC: 250/400

Max. switching capacity AC1 VA: 4,000

Max. switching capacity AC15 (230VAC) VA: 750

1-phase motor load, AC3 operation (230VAC) kW: 0.5

Max. switching current DC1: 16/0.3/0.12

Min. switching load mW (V/mA): 300 (5/5)

Contact material: AgNi

## **Plug-in relay for manual control unit, DIN rail 24VDC; 2-pin, 8A**

Order number: 300.16284

Order code: Steckrelais für Handbedieneinheit, 24VDC; 2-polig, 8A

Number of contacts: 2 changeover

Max. continuous current/max. Inrush current A: 8/15

Rated Voltage/Max Switching Voltage VAC: 250/400

Max. switching capacity AC1 VA: 2,000

Max. switching capacity AC15 (230VAC) VA: 350

1-phase motor load, AC3 operation (230VAC) kW: 0.37

Max. switching current DC1: 8/0.3/0.12

Min. switching load mW (V/mA): 500 (5/100)

Contact material: AgSnO2

# ***Poti and O/1/Auto hand control units for DIN rail housing with plug-in relay***

## **Plug-in relay for manual control unit, DIN rail**

### **24VDC; 2-pin, gold contact**

Order number: 300.16285

Order code: Steckrelais für Handbedieneinheit, 24VDC; 2-polig, Goldkontakt

Number of contacts: 2 changeover

Max. continuous current/max. Inrush current A: 6/10

Rated Voltage/Max Switching Voltage VAC: 250/400

Max. switching capacity AC1 VA: 1,500

Max. switching capacity AC15 (230VAC) VA: 300

1-phase motor load, AC3 operation (230VAC) kW: 0.185

Max. switching current DC1: 30/110/220V A: 6/0.2/0.12

Min. switching load mW (V/mA): 500 (125/10)

Contact material: AgNi+Au Gold contacts

Silver-nickel contact with a galvanically applied hard gold plating with a typical thickness of 5 µm. Gold is largely insensitive to industrial atmospheres. In the area of small switching capacities, the contact resistances are lower and more constant than with other contact materials.

## **Plug-in relay for manual control unit, DIN rail**

### **24VDC, optocoupler**

Order number: 300.14375

Order code: Steckrelais für Handbedieneinheit, 24VDC, Optokoppler

Number of contacts: 1 changeover

Max. continuous current/max. Inrush current A: 5/40

Rated Voltage/Max Blocking Voltage VDC: 24/35

Switching load voltage range VDC: 1.5...24

Repetitive peak reverse voltage Vpk: -

Minimum switching current mA: 1

Max. residual current at 55°C mA: 0.01

Max. voltage drop at 20°C and rated current V: 0.3

## **Plug-in relay for manual control unit, DIN rail**

### **24VDC, Solid State Relay**

Order number: 300.18247

Order code: Steckrelais für Handbedieneinheit, 24VDC, Solid State Relais

Number of contacts: 1 changeover

Max. continuous current/max. Inrush current A: 3/40

Nominal voltage/Max switching voltage VAC: 240 / -

Max. switching capacity VAC: 12 ... 275

Repetitive peak reverse voltage Vpk: 600

Minimum switching current mA: 50

Max. residual current at 55°C C mA: 1

Max. voltage drop at 20°C and rated current V: 1.1